



Disclaimer – Binding Plate Installation

Rottefella bindings are designed and manufactured to meet the highest standards of performance and safety. At all times must Rottefella's manuals and installation instructions be followed. However, even if Rottefella's manuals and installation instructions are followed, please note that the Rottefella bindings rely on the integrity of the ski plate to which they are mounted. This plate is factory-installed and glued directly onto the ski by the ski manufacturer, not by Rottefella. Please be aware that inadequate bonding of the plate to the ski may compromise the function and safety of the binding. It is vital to ascertain that the ski and plate are in proper condition before mounting a Rottefella binding to the ski. Any concerns regarding the plate installation must be addressed with the ski manufacturer or retailer prior to use. Rottefella assumes no liability and provides no warranty, express or implied, for any malfunction, defect, or performance issue of the binding that is caused by improper installation, adhesion failure by the ski manufacturer, or other defects related to the ski plate, which are not Rottefella's liability.

BEFORE YOU BEGIN MOUNTING THE BINDING, IT IS IMPORTANT TO IDENTIFY WHICH MOUNTING PLATE IS ON THE SKIS AND WHICH INSERT SHOULD BE USED.

WHICH MOUNTING PLATE ARE ON THE SKIS?



ROTTEFELLA ADAPTIVE PLATE

The Rottefella Adaptive Plate is found on several skis from Madshus, Kästle, Peltonen, and Skitrab, manufactured in 2025 or later.



IFP MOUNTING PLATE

The IFP plate is found on most skis from Fischer and Rossignol manufactured in 2017 or later.

WHICH INSERT SHOULD BE USED? NOTE: ONLY ONE INSERT SHOULD BE USED.



SKATEX MOVE PRO ADAPTIVE INSERT

If the binding is to be mounted on Rottefella Adaptive Plate, this is the insert that should be used.



SKATEX MOVE PRO IFP INSERT

If the binding is to be mounted on IFP mounting plate, this is the insert that should be used.

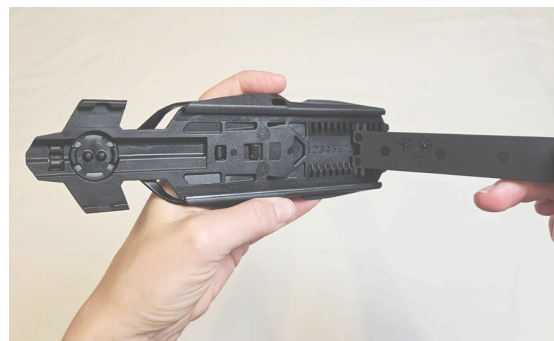
A FOLLOW THESE STEPS TO MOUNT ROTTEFELLA SKATEX MOVE PRO ON ROTTEFELLA ADAPTIVE PLATE:



1 MOUNTING THE BINDING ACCORDING TO THE CORRECT SHOE SIZE

Turn the heel plate and binding housing so that the underside is facing up. The numbers 1-11 is engraved into the underside of the binding house. 1 is approximately size 36 and 11 is around 47.

To attach the two pieces together you put the heel piece into the binding.



Push until you hear a click.



2 MOUNTING THE BINDING ONTO THE MOUNTING PLATE/SKI WITH INSERT

Slide the binding onto the mounting plate by starting with the heel plate at the front of the mounting plate. Make sure the edges on the underside of the binding engage with both sides of the mounting plate.



Stop approximately half way.

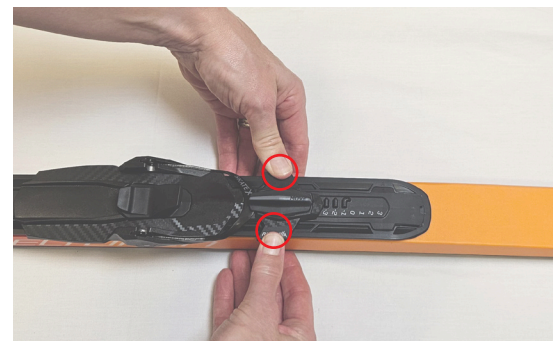


Place the insert into the front of the binding. Push firmly down towards the ski, and continue to push the binding (including insert) backwards.

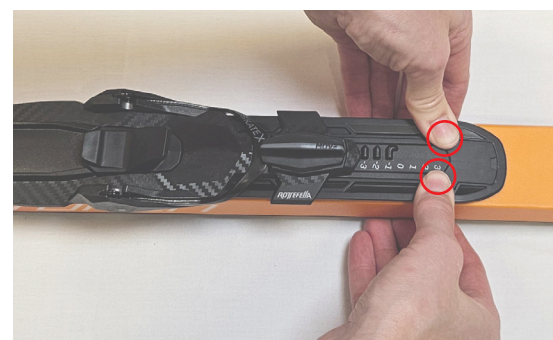


3 MOUNTING THE BINDING ACCORDING TO THE CORRECT SHOE SIZE

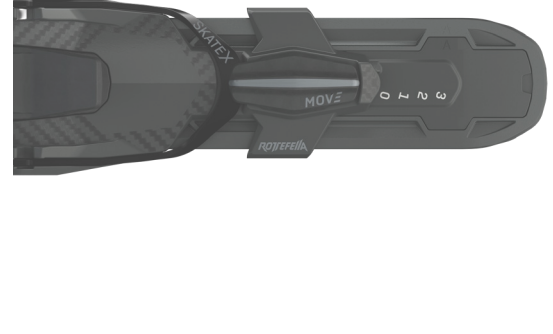
Push the binding backwards, until it stops. The insert should now be aligned with the mounting plate. Push firmly down on each side of the front of the binding.



Push firmly down on each side of the insert, until you hear a click.



The binding is in the '0' position when it looks like the picture below.



SEE VIDEO FOR MOUNTING OF ROTTEFELLA SKATEX MOVE PRO ON RAP PLATE



SEE VIDEO FOR MOUNTING OF ROTTEFELLA SKATEX MOVE PRO ON IFP PLATE

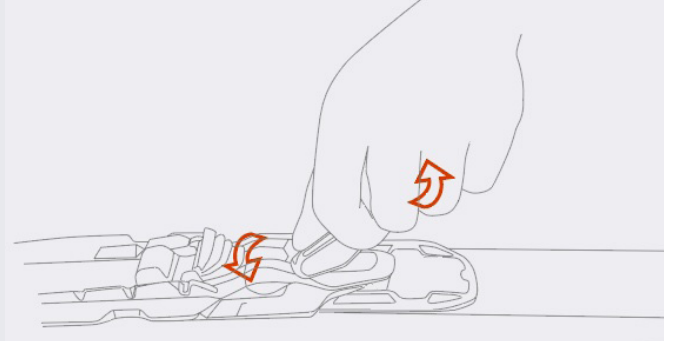


HOW TO USE THE SKATEX MOVE PRO BINDING

MOVE THE BINDING BACKWARD

Turn the lever counterclockwise to move the binding backward. There are a total of 6 positions.

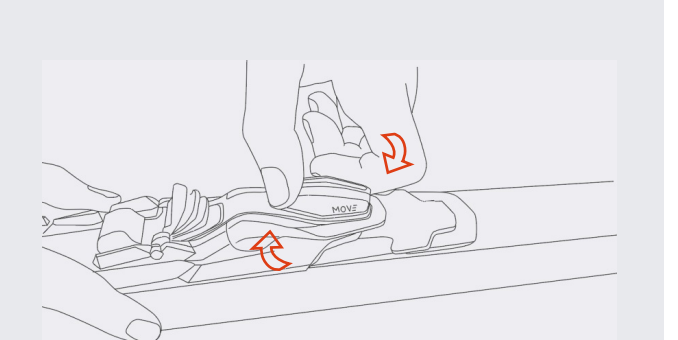
Move the binding backward for better glide.



MOVE THE BINDING FORWARD

Turn the lever clockwise to move the binding forward. There are a total of 6 positions.

Move the binding forward for better grip.



B FOLLOW THESE STEPS TO MOUNT ROTTEFELLA SKATEX MOVE PRO ON THE IFP MOUNTING PLATE:



1 MOUNTING THE INSERT ONTO THE MOUNTING PLATE

Start by placing the insert into the IFP plate.



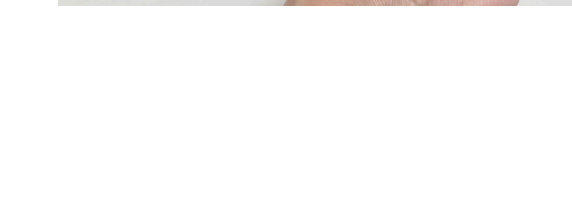
Use a pen to mark the area where the top of the insert stops.



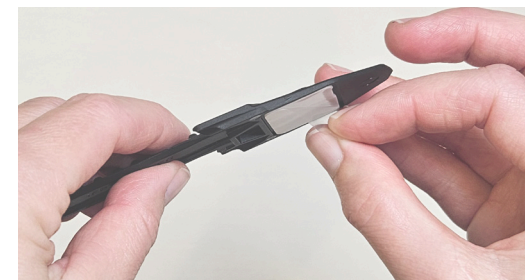
Use the abrasive pad to roughen the area in front of the IFP plate where the insert will be attached to the ski.



Use the included cleaning wipe to clean the same area, in front of the mounting plate, where the adhesive pad under the insert will be attached. Make sure the area is completely dry before starting the mounting the insert.



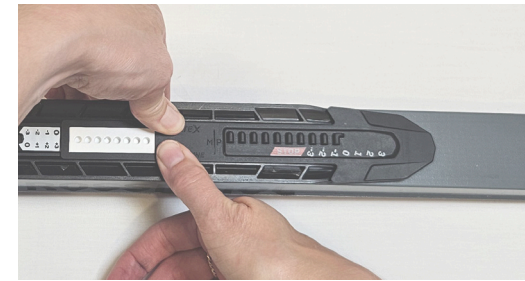
Remove the plastic film from the adhesive pad.



Place the back of the insert into the mounting plate and push down. Ensure that the small hook on the insert is secured into the mounting plate (at the rear near the white plastic part) before working your way forward toward the top of the mounting plate.



Push down on the insert above the window. The window on the insert should align with the white part of the mounting plate.



Once the insert is clicked into place, press the front part of the insert down toward the ski, as shown below.



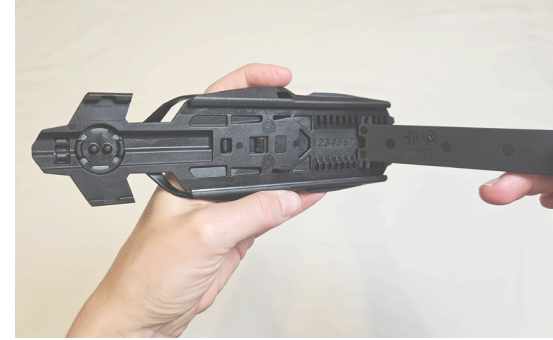
Press for at least one minute to ensure that the adhesive from the pad bonds properly to the ski.

To ensure a permanent bond, the adhesive must cure for 24 hours before use.

2 MOUNTING THE BINDING ACCORDING TO THE CORRECT SHOE SIZE

Turn the heel plate and binding housing so that the underside is facing up. The numbers 1-11 is engraved into the underside of the binding house. 1 is approximately size 36 and 11 is around 47.

To attach the two pieces together you put the heel piece into the binding.



Push until you hear a click.



3 MOUNTING THE BINDING ONTO THE MOUNTING PLATE/SKI

Turn the MOVE handle 90 degrees.



Slide the binding onto the mounting plate by starting with the binding housing at the rear of the mounting plate. Make sure the edges of the binding engage securely on both sides of the mounting plate. Push the binding forward until it stops.



Turn the move handle counter-clockwise to move the binding forward, to '0' position.



The binding is in the '0' position when it looks like the picture below.

